

SPRING 2020

# Pennsylvania

PENNSYLVANIA

CHAPTER

Land Improvement Contractors  
of America

LICA

DEDICATED TO PROFESSIONAL  
CONSERVATION OF  
SOIL & WATER

# LICA

Since 1970

## PALICA CELEBRATES 50 YEARS AT THE PALICA WINTER MEETING



Our legal speaker addressed the topics of how to collect bad debts & the legality of contracts. He was great and will be back next year!



We loved our new venue at the Days Inn in State College, and will be back there next March. We were able to enjoy the "porch" for breakfast and lunch.



## UPCOMING EVENTS

- ❖ *PALICA BOARD MEETING - April 2020, time and location TBA*
- ❖ *National LICA Summer Meeting, July 7-11, Niagara Falls Sheraton (more details to come).*
- ❖ *PALICA Summer Meeting & Picnic @B.R. Mutzabaugh Jr. Compound in Dauphin PA (July - date TBA)*
- ❖ *PALICA Field Days at the Mercer County Conservation District Munnell Run Farm - (more details to come) Friday/Saturday July 31<sup>st</sup>-August 1<sup>st</sup>.*
- ❖ *PA One Call Safety Show in Erie PA - Monday Sept 21 @ the Erie Bayfront Hotel (times TBA)*
- ❖ *PALICA SAFETY DAYS at the Clarion Hotel in Exton PA (Friday/Saturday in November - dates/time TBA)*
- ❖ *PALICA 2021 WINTER MEETING - March 5<sup>th</sup> & 6<sup>th</sup> @ Days Inn by Wyndham in State College, PA*



## PRESIDENT'S MESSAGE

**Hello PALICA Members,**

I'm hoping all are faring well with the wonderful weather this winter has given us. I guess the good thing is it has given us all much-needed time for maintenance. Our winter convention was held in State College this year . It was a very good time and we had a few new faces there which is always a good thing. The training and speakers were, as always, top notch. We are also proud to announce we have a new board member from the eastern side of the state, and he was instated at the convention. We are planning a field day for this year, which will be held near Mercer, PA. It will be a two-day event with many different projects to be completed. Dealers and other Associates will be there with demo equipment. That will make for a very good event to attend. I know it's hard to get away in the prime of the season, but I do urge all of you to attend; the relationships and knowledge that can be gained is endless. In closing, I hope as everyone is ramping up for a busy season ahead, we all keep safety in mind.

**Regards,**

*Chris Moore*

## INSIDE THIS EDITION:

### **FEATURES:**

- |  |                        |
|--|------------------------|
| ○ <b>PALICA CELEBRATES 50 YEARS</b>      | <b>COVER</b>           |
| ○ <b>President's Message</b>             | <b>Page 1</b>          |
| ○ <b>Upcoming Events</b>                 | <b>Page 1</b>          |
| ○ <b>More from 2020 PALICA Meeting</b>   | <b>Page 2 &amp; 3</b>  |
| ○ <b>OSHA &amp; Trench Safety</b>        | <b>Page 4 &amp; 5</b>  |
| ○ <b>YOUR MOST UPDATED BENEFITS</b>      | <b>Pages 6-8</b>       |
| ○ <b>Construction Technology</b>         | <b>Page 9</b>          |
| ○ <b>Safety Watch</b>                    | <b>Pages 10&amp;11</b> |
| ○ <b>Poor Truck Maintenance Article</b>  | <b>Page 12</b>         |
| ○ <b>News Around PALICA</b>              | <b>Page 13</b>         |
| ○ <b>Welcome PALICA's Newest Members</b> | <b>Page 14</b>         |
| ○ <b>ASSOCIATE MEMBER ADS</b>            | <b>Pages 15-19</b>     |



# 2020 WINTER MEETING IN STATE COLLEGE, PA – CLASSES, ASSOCIATES' NIGHT & CLOSING DINNER



The ladies did some amazing jar art Friday afternoon!



Board Members on Saturday



More benefit classes



Great food, friends and fun!



After the classes, it was time for some fun!



Associates' Night fun, and live and silent auctions to raise funds for our Scholarship Fund- we raised a little over \$2500.

**SPECIAL THANKS TO OUR  
AUCTIONEER BRUCE MOSIER AND  
JIM JANSEN!**





FRIDAY ASSOCIATES NIGHT CONTINUED ALONG WITH THE  
CLOSING BANQUET SATURDAY NIGHT



Associates' Night fun with the scholarship auction, the great associates/vendors and our amazing magician who involved the entire audience!

Pa One Call put on a great class Saturday morning w/the PUC



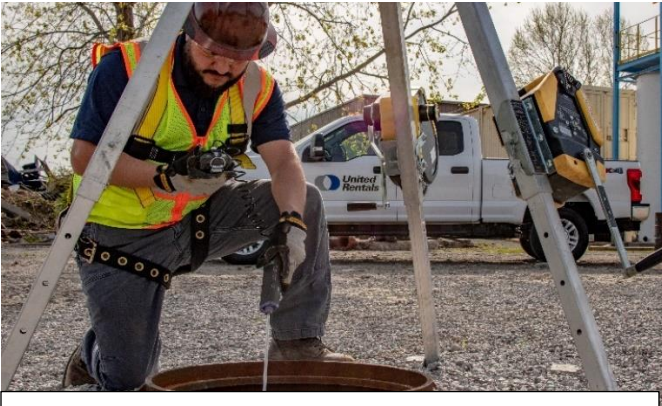
Closing banquet and award celebration – A.R. Beatty won Associate of the Year – from Erie, PA and Ron Roncaglione won Contractor of the Year – from Linesville PA – we were also able to grab a group picture for those that were still around til the very end!





# Trenching experts spell out OSHA Confined Spaces compliance, warn against ‘choosing your rules’

(reprinted with permission from Randallreilly.com)



A truck is parked beside a manhole that a worker has just entered. It's a cold day so the truck is running, but no one's thinking about the hazardous fumes heading down the hole. Unfortunately, it's one of countless daily evidences that OSHA's confined spaces standards for the construction industry are widely misunderstood and frequently not applied.

OSHA's 2015 revisions to the 1994 [Confined Space Standard](#) 1920.146 were the subject of a workshop presented at United Rentals' Total Control and Innovation Conference this week in San Antonio, Texas, underscoring the rental giant's top messaging: UR is serious about putting customer advocacy into action.

Trenching safety experts Bruce Magee and Chad Lindsley, UR region product development managers, took attendees into the proverbial trenches of the 2015 Confined Spaces rule 1926AA.

The OSHA rollout four-plus years ago, said Magee, was about as smooth as tangled fishing line, namely because the original standard remained, leaving industrial businesses to figure out which standard to follow. Industrial and construction firms, he says, have erroneously continued to follow the original standard, which was intended to protect employees in general industry, not agriculture, construction or shipyard employment. While there are similarities between the old and revised standards, important differences have to be understood and applied for confined spaces safety compliance today.

Central to compliance: If you're in construction, the new rules apply.

Magee was quick to note that choosing which rules to follow is not an option, citing a statement from OSHA: *"...An employer does not have the option of bypassing the procedures that are unique to this final rule by complying instead with [the original] § 1910.146. Such a policy would severely undermine OSHA's effort to protect employees from the unique hazards present during confined-space operations in construction."*

## What you need to know right now

Following are a few highlights of the revised OSHA standard as outlined by Magee and Lindsley:

(1) The new definition of confined space boils down to three components, and all three conditions must exist: limited means of entry/exit, large enough to enter, and not designed for continuous occupancy. Examples of OSHA-defined confined spaces include manholes, tunnels, wells, tanks, pipes, grease pits, cold storage, subcellars, culverts and silos.

(2) Always test and continue to test throughout a project that involves Permit-Required Confined Spaces (PRCSs) in case hazardous conditions occur while the work is being performed.

(3) A "Qualified Person" is no longer adequate as the responsible individual during entry of confined space; 1926AA calls for a Competent Person, and, says Lindsley, it's a mistake to blanket categorize everyone on the team with this designation.

Here's how Lindsley and Magee explained the difference:

**Competent Person:** "One capable of identifying existing and predictable hazards in the surroundings or working conditions that are unsanitary, hazardous, or dangerous to employees, and who has authority to take prompt corrective measures to eliminate them."

(CONTINUED ON NEXT PAGE)

**Qualified Person:** “One who, by possession of a recognized degree, certificate, or professional standing, or who by extensive knowledge, training, and experience, has successfully demonstrated their ability to solve or resolve problems relating to the subject matter, the work, or the project.”

(4) Four individuals are required to perform specific roles at a PRCS:

- *Authorized Entrant* – An employee is authorized by the entry supervisor to enter a PRCS and must know the confined space hazards, physical symptoms and consequences, as well as understand the proper use of all equipment to be used in the PRCS. There will be constant communication with the attendant, and the entrant will exit promptly when necessary or advised by the attendant.
- *Attendant* – This individual is stationed outside one or more PRSCs to ensure that employees can safely enter and work within the space. The attendant remains outside the PRCS, monitoring both the entrant and surrounding area (remember the truck fumes where we started?), and ready to summon rescue if needed.
- *Entry Supervisor* – The qualified person (employer, foreman, crew chief) who is responsible for determining if acceptable entry conditions are present at a PRCS.
- *Emergency Rescue Personnel* – Employers must select a rescue team or emergency service that has the capability to reach the victim(s) in a timely manner, is equipped for and proficient in performing rescue services, and agrees to notify the employer immediately if the rescue service becomes unavailable.

(5) Training is big. OSHA’s 1926AA requires that employers provide training to all affected employees in a language and vocabulary that the worker understands. Further, Magee explained, the training must be:

- At no cost to employee
- Before the first PRCS entry assignment
- Before duties change
- Whenever hazards change

## OSHA inspectors save workers just before Colo. trench collapse



(reprinted with permission from [Randallreilly.com](http://Randallreilly.com))

Inspectors with the [U.S. Occupational Safety and Health Administration](http://www.osha-slc.gov) were at a jobsite in Cascade, Colorado, earlier this year when they saw three workers in an unprotected, 13-foot-deep trench.

The inspectors ordered the workers out of the trench. Soon after they exited, OSHA reports, one of the walls collapsed.

“In this instance, the inspectors’ quick action removed workers from what could have been a tragic event,” said OSHA Englewood Area Director David Nelson. “Employers are required to install adequate cave-in protective systems before allowing employees to enter a trench or excavation.”

RMS Utilities of Alamosa was recently issued \$92,819 in proposed penalties for the June 26 incident, according to OSHA.

OSHA reported the following violations: no cave-in protection, \$79,559; employees exposed to struck-by hazards while working beneath a loaded excavator bucket, \$6,630; and a spoil pile was within 2 feet of the trench, \$6,630.

RMS is contesting the violations.





# Exclusive National LICA Benefits

Land Improvement Contractors of America

3080 Ogden Ave. Suite 300, Lisle, IL 60532

Phone: 630-548-1984 • anational.lica@gmail.com • licanational.org

## Caterpillar Extended Powertrain Protection Program



Your powertrain will be covered for up to three years or 5000 hours on your next new CAT machine! The plan covers parts and labor for powertrain component failures caused by defects in materials or workmanship. You can work confidently backed by the power of the earthmoving equipment leader. Now you can control costs, avoiding the expense of covered repairs. Contact your CAT dealer for details.

## Sunbelt Rentals Discount



When it comes to land improvement projects, we equip customers for success by offering the equipment you need, when and where you need it. By renting from Sunbelt Rentals, a National LICA partner, LICA members can easily access eqNationaluipment through our national network of locations. And, we're proud to offer a 10% discount as part of our exclusive LICA member discount program. See your local dealer for details.



## National LICA Contractor Magazine

The LICA Contractor was launched in 2007 and the response has been overwhelmingly positive. This quarterly publication is being used to keep LICA members up-to-date in their industry, as well as to highlight our members' unique and challenging projects.

## Mack Truck Let's Build Program



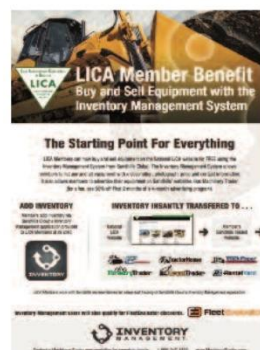
Mack Trucks is pleased to offer this Program to LICA Members! Exclusive Program Benefits:  
- FREE Engine Plan 2, Chassis Plan 2 and EATS (engine after treatment system – emissions) when the unit is financed with Mack Financial Services (MFS). The combined value of this offer is up to \$6,760 (>460 HP) or \$6,290 for less than 460HP. Contact your local dealer for details

## LICA Contractor Safety Management Plan



This comprehensive safety manual provides LICA members with recommended safe operating procedures. It's designed to be your individual company safety program or supplement to your existing program. It contains toolbox talks, equipment and jobsite inspection forms and much more. This manual is worth thousands of dollars and is FREE to every contractor member.

## LICA Members: Buy & Sell Equipment with the Inventory Management System



LICA Members can now buy and sell equipment on the National LICA website for FREE using the Inventory Management System from Sandhills Global. The Inventory Management System allows members to list any and all equipment with a description, photograph, price and contact information. It also allows members to advertise their equipment on Sandhills' websites like: Machinery Trader and Auction Time (for a fee, see 50% off First 2 months of a 4-month advertising program). Contact: 1-800-247-4898

## LICA Advertising Discount from Sandhill Publishing



Sandhill Publishing 50% advertising discount for all of their publications the first two months of a four month commitment. Publications include: Machinery Trader, Auction Results, Auction Time, Rental Yard, Tractor House, Power Systems Today, Tuck Paper, Crane Trader, Oilfield Trader and Market Book. Contact: 1-800-247-4898



## LICA Member eCommerce Benefit



LICA Members can sell directly from their websites with the eCommerce benefit from Sandhills Global. Make it easy for your customers and turn your website into a convenient place to shop. eCommerce takes care of check-out and invoicing for you and your customers.

Contact: 1-800-247-4898

## LICA Beef Benefit



### 25% OFF AT PIEDMONTESE.COM DISCOUNT CODE: LICA

Certified Piedmontese beef is a naturally lean, nutritious beef low in fat and calories, yet high in protein.

Order Online At Piedmontese.com

- Gourmet steaks
- Premium roasts
- Exceptional beef jerky
- Gift boxes and gift cards
- Free Shipping on order over \$99

## The LICA Portal



Log-in to your personalized LICA Portal & you can search for safety materials. The LICA Portal Offers: OSHA Requirements, Risk Mgmt. Materials, Property & Casualty Info. and more! All are ready to download, print and customize for your needs. Contact: [anational.lica@gmail.com](mailto:anational.lica@gmail.com)

## Petrocon CAT Parts Replacement Program



Petrocon has launched a brand new CAT® aftermarket replacement parts program. This national offering will be a full comprehensive program to replace OEM Caterpillar® parts at substantial savings to our contractors. Expected savings are 20-40% over OEM parts.

Contact: 866-548-8750

## LICA Member Currency Benefit



LICA Member Equipment Financing from CurrencyFinance is financing for members or their customers who want to purchase equipment. There are no prepayment penalties, selectable terms up to 72 months and finance options up to \$150,000.

LICA Member Credit Card Processing from CurrencyPay. Benefits include: multiple payment method options, complementary bluetooth card reader or POS terminal, no

contract or commitment with transparent, at processing fee, rebates for processing - reduce your fees to 0%, and a one-time \$10 sign-up fee. Contact: 1-800-247-4898

## LICA Member Premium Hosted Website Benefit



LICA members can host their websites with Sandhills Global and receive 5% off a HTML package and 10% off a CMS package in addition to free banner advertising online. See your website advertised on Machinery Trader or Auction Time and reach more potential customers. When hosting with Sandhills you receive: priority level service, professional data backup, communication with the designer and it's all completely customizable. Contact: 1-800-247-4898

## Petrocon



This program will generate savings for LICA members. Members will receive a minimum savings of 10% on their oil, tires, electric, cellular expense and possibly much more, pending the geography the member resides in. You will also have access to the Petrocon Portal to make ordering even easier! [www.petrocon.org/portal.html](http://www.petrocon.org/portal.html)  
Contact: 866-548-8750  
or [jdgirov@petrocon.org](mailto:jdgirov@petrocon.org)

## Cooper Tire Program



Petrocon can now offer a special discount program with Cooper Tire & Rubber Company. It's an American company that specializes in design, manufacturing and sales of replacement commercial truck tires.

Contact: 866-548-8750 or [jdgirov@petrocon.org](mailto:jdgirov@petrocon.org)



## Bridgewell Health



Land Improvement Contractors of America pleased to offer three unique limited benefit plans through Bridgewell Health that cover all the bases for Minimum Essential Coverage but also go further, offering limited outpatient and inpatient medical benefits for employees - with tangible benefits that they will appreciate!  
Contact: (833) 202-6495

## MASA: Medical Transport Solutions



MASA provides medical emergency transportation solutions AND cover your out of pocket medical transport cost when your insurance falls short. With MASA, you will have ZERO out of pocket expenses for any emergent air or ground transport, REGARDLESS who transports you!  
Contact: 314-540-5729 or azink@masamts.com

## Piston & Piston Kits



Now available from Petrocon. The pistons are the hardest working components CTP Crown & Skirts - now sold separately inside a diesel engine. CTP pistons are designed and manufactured to meet most rigor and stringent specifications.

Contact: 866-548-8750 or jdgirov@petrocon.org

## C2C Business Succession



Coast 2 Coast is a national network of independent financial professionals. They provide planning for: business succession, estate and wealth transfer strategies, buy/sell arrangements, insurance and risk management reviews and brokerage, key employee retention strategies and more. LICA members get a no-fee initial consultation.  
Contact Nan Merrill at 402-944-2331 or nan@thejohnsoncompany.net



## BenefitMall

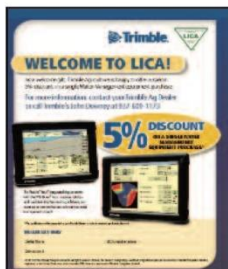
BenefitMall offers payroll services focused on the needs of construction and related industries. They offer customized solutions to fit your company's needs. The experienced staff of Payroll Specialists will simplify your payroll processing experience.

Patrice Alvino  
Patrice.Alvino@benefitmall.com  
Phone: 646-346-8301



## LegalShield: Identity Theft, Personal & Business Protection

At LegalShield, we've been offering legal plans to our members for over 40 years, creating a world where everyone can access legal protection—and everyone can afford it.  
Contact: 973-464-1287 or houstonbarbara@gmail.com  
www.legalshield.com/info/NLICA



## Trimble Coupon

Every NEW Contractor Member receives a coupon from Trimble for a 5% discount! Sign-up a Contractor Member? Contact National LICA for a sponsor 5% coupon!



## Clean Fire New Member Discount

Clean Fire Distributing is offering you a \$50/case discount on Clean Fire Diesel fuel additive to help lower your fuel and maintenance costs.





# A New Year's Suggestion: Resolve to master some aspect of construction technology

(reprinted with permission from Randallreilly.com)



This time of year, people are thinking about starting a diet and exercise program, understandably. But instead of self-improvement, what about making a resolution to improve your business or your craft?

If you are in the construction business and looking for an edge, there is no better time to start than now and no better year than 2020. I'm talking about learning more about construction technology and doing so at this year's two major trade shows: the World of Concrete, February 2 to 7; and [ConExpo](#), March 10 to 14. Both shows are in Las Vegas.

At the last ConExpo (2017), I was shocked at how big the booths were and how much space construction software companies occupied in the Las Vegas Convention Center South Hall. Less than 10 years ago most of these companies didn't exist and the ones that did typically worked out of those tiny 10-by-10-foot booths on the margins of the show. Today they are major players at the show and in this industry.

Since ConExpo only comes around every three years, this is a major opportunity for anybody who wants to get better organized, more efficient, more profitable and improve their business.

But a software shopping trip to Las Vegas once every three years is not enough when it comes to learning more about technology to improve your business. The late Pettus Randall Jr., who founded Randall-Reilly, the company that publishes *Equipment World*, once told us that if you read for an hour every day consistently on one subject, at the end of a year, you'll be knowledgeable, if not an expert. Don't believe me? Do the math. An hour a day, five days a week, 50 weeks a year equals 250 hours of study.

James Clear in his book "Atomic Habits" and Charles Duhigg in "The Power of Habit" have written about how tiny changes in habits over a long period create big results. Don't try to lose weight, learn Spanish and memorize the Constitution all at once. Just dedicate 30 or 60 minutes a day to learning more about a certain technology or software platform – online, in books or magazines, through YouTube, whatever media floats your boat – but do it every day.

And incidentally, something I discovered to improve retention is to spend the last five minutes of that time writing down what you learned that day. Keep a dated journal of the knowledge acquired. You don't have to write an essay. One sentence is sufficient. Three sentences is more than enough. This is just to jog your memory. Repetition is the key to learning.



# Cold weather calamity

An attempt to clear ice from foot controls leads to death of operator

**The accident:** On a cold January night in Michigan, the operator of a skid steer was getting ready to plow snow after a recent storm, when he noticed the foot controls weren't operating properly. In the days prior, snow and ice had gradually accumulated in the foot space of the skid steer and had begun to interfere with the operation of the foot pedals.

With the boom arms raised, the operator stood on the ground and began clearing the snow and ice around the foot pedals by hand. While doing so, he evidently engaged the toe of the left foot pedal, which lowered the boom arms.

Accident investigators found the deceased man pinned between the hydraulic tilt cylinder and the skid steer frame. The engine was not running, but the seat bar was in the down position, which unlocks the controls.

The skid steer was 10 years old, but had very few hours on it. Investigators found that the seat bar was functional, but that the loader did not have a lift arm support available to the operator. The deceased had some familiarity with the machine, and had cleared snow for the property owner before.

Since there were no witnesses to the accident, investigators came up with three likely scenarios:

**1.** The operator exited the cab with the bucket up and the engine off, but lowered the seat bar after exiting. With the seat bar in the down position, the pedal interlocks were not engaged. While cleaning, he exerted enough force



Illustration by Don Lomax

to activate the left pedal and lower the bucket.

**2.** The operator exited the cab with the bucket raised. But, because of the snow and ice accumulation around the foot pedals, the raised seat bar did not lock the foot pedals in neutral. The operator may have lowered the seat bar in a last-gasp attempt to restart the machine and raise the lift arms.

**3.** The operator started clearing the ice while standing on ground with the engine off and the bucket on the ground. But, because access was difficult, he reentered the skid steer, started it, and raised the bucket. Then, he turned the machine off, exited, and resumed cleaning when he accidentally engaged the left foot pedal.

## How to prevent accidents like this:

- Employees should be aware that snow and ice can cause a variety of frustrating problems with

machinery and controls. During the winter, keep all moving parts and controls clean and ice-free. Be patient, and don't force the equipment to do something it shouldn't. Remember: Fix it. Don't force it.

- Operators, mechanics and field personnel should be reminded that prolonged exposure to cold temperatures can cause confusion and disorientation. Avoid working solo or taking unnecessary risks in these conditions.
- All service and maintenance work should be performed with the lift arms down and the bucket flat on the ground.
- A lift arm support should always be available to operators and mechanics. Train your employees on proper lift arm support use.
- Always ensure that the seat bar is in the raised position and that the lockouts are fully functional before exiting the cab.

CDC Investigation #01MI001. For more information and cold weather tips go to: <http://cdc.gov/niosh/face/stateface/mi/01mi001.html/>



Date of safety talk: \_\_\_\_\_ Leader: \_\_\_\_\_  
 Attending: \_\_\_\_\_





# Welding worries

## Things you can't see can kill you.

**The accident:** A construction worker was welding a catwalk to a 15-foot-tall waste oil tank. Vapors from the tank ignited, causing an explosion that launched the worker into a truck parked more than 100 feet away. He died from multiple internal injuries, and three other people were injured in the explosion.

**The bottom line:** Sparks from welding and cutting can travel up to 35 feet in a horizontal or vertical direction from the work area, and even greater distances when falling. The workers involved in this accident failed to take proper steps to keep sparks away from vapors created by a combustible material.

### Realize the risk

Welding and plasma cutting create a variety of hot material such as sparks, slag and molten metal. Sparks are particularly dangerous, because not only do they travel great distances, they can also travel through small openings and become lodged. Worksites often include a range of combustible materials such as clothing, paper and chemicals, as well as flammable materials such as liquids, vapors, gases and dust. Anyone who welds should follow fire and explosion prevention procedures to the letter. A hot work or confined entry permit may also be required.

### Proper prep

If possible, stay away from combustible materials entirely. Remove either the materials from the work area, or the work area from the materials.



Illustration by Don Lomax

If removing the material is impossible, special precautions are required. Enclose the work area with fire resistant screens, and cover all doors, windows and cracks with fire resistant material. Protect the combustible material with fire resistant covers. Ensure the material you're welding does not have a combustible coating or material that can produce toxic or flammable vapors.

Check the atmosphere itself within the work area. Avoid welding or cutting when reactive or flammable gases, vapors, liquids or dust are present. Make sure the work area is adequately ventilated to keep gases and vapors from accumulating. Keep fire extinguishing equipment on hand during the welding process.

### Smart follow-up

Once finished, check the area for hot or smoldering material, which can ignite later. If needed, have a firewatcher in the area for a half hour after the job is complete. Carefully dispose of hot slag to avoid contact with combustible material. **EW**

*Information for this Safety Watch came from an accident report, the American Welding Society, OSHA, the National Fire Protection Association and the American National Standards*

*Institute. It is meant for general information only. To order safety materials, visit [www.aws.org](http://www.aws.org). Many manufacturers also have comprehensive safety resources and training available.*

# POOR TRUCK MAINTENANCE CAN PROVE COSTLY

One of the most important things to know when purchasing a Class B vehicle, is that the initial price is just a fraction of the total cost of ownership. Repairs and maintenance are a major expense of doing business for any fleet, according to Fullbay, a database of heavy duty repair shop software, even the best built trucks on the market will experience issues at some point.

In order to keep a tank truck in the best shape, owners need to stay on top of repairs. This means being financially equipped to pay for the inevitable incidents such as worn-out brakes and/or tires, and failing engines. According to a study on carriers' equipment-related costs, American Transport Research Institute (ATRI) found that repair and maintenance costs per mile have increased by more than 60 percent to 16.7 cents per mile between 2008 and 2017.

Fullbay Software broke down the top maintenance and repair costs in order of the largest to smallest percentage as follows:

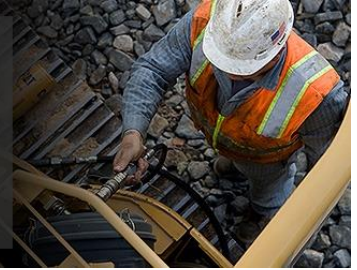
1. Tires and related parts (ie liners, valves and tubes) 43%
2. Preventive maintenance – 12 %
3. Brakes and related systems – 9%
4. Disposable parts – 8 %
5. Exhaust structure – 6%
6. Fuel system – 6%
7. Lighting – 5%
8. Cranking or starting system – 5%
9. Power plant – 3%
10. Motor and engine -3%

Although each number looks relatively small, the costs add up. "It's not a matter of which maintenance and repair problems will occur, but when," Fullbay officials said.

Regular maintenance adds up to roughly \$15,000 each year and could cost even more if the driver is not proactive about repairs, according to [askthetrucker.com](http://askthetrucker.com)

It is incredibly important to be saving money for consistent repairs or maintenance. It's not a matter of if your vehicle will need a repair but when. Jeff Rogers, director of maintenance for the east region for Ryder System Inc., said the number one maintenance mistake a driver or operator can make is ignoring the check engine or exhaust lights.

**PREVENTIVE  
MAINTENANCE CAN  
REDUCE MACHINERY  
REPAIR BILLS BY 25%**



There are hundreds of sensors on today's vehicles, according to Rogers, and they each provide a specific function. "Many breakdowns can be avoided by simply paying attention to your truck and the warning lights. It's as simple as that," Rogers said.

Tires and brakes are the most common wear items on Class 8 vehicles, according to Rogers. Because of this, his first piece of advice for anyone operating a heavy-duty vehicle is to carry a calibrated tire pressure gauge in the vehicle. "Kicking a tire with your foot is no way to tell if it's low on air or not. Just buy yourself a calibrated tire pressure gauge. I promise it's worth it," Rogers recommended.

One important piece that is often overlooked when it comes to maintenance according to Rogers is the diesel particulate filter (DPF). This device removes particulate matter or soot to prevent its release into the atmosphere. Although a filter can take a year or two to fill, once it gets plugged, the truck will simply no longer run, Rogers said. As the most commonly overlooked or procrastinated maintenance check Rogers said that it is essential that the filter is checked at least once a year, because this is "a big issue today with trucks."

**Some maintenance experts recommend keeping shorter life cycles for heavy-duty trucks, according to Fullbay. It is estimated that buying or leasing a new truck every three years could save over \$17,000 in maintenance costs as compared to buying or leasing a new truck after five years or more. The longer owners keep their truck, the more it will cost them in maintenance and repairs, according to Fleet Advantage.**

Although maintenance for a heavy-duty vehicle comes with a high price tag, most experts recommend participating in a preventative maintenance program. Maintenance companies, like Ryder, provide a scheduling system for monthly, seasonal and annual safety and maintenance inspections. "Everyone wants their fleet to be the safest fleet in the country," Rogers said. The only way to do this is by keeping vehicles in tip-top shape by staying on top of maintenance."



## NEWS AROUND PENNSYLVANIA LICA--please read info below

**PALICA DUES INVOICES** went out in October – some of you said you didn't receive those, or the 2 statements that followed, so please be sure to update your address and email information with the office so we can avoid this next year, and to be sure your information is correct in the upcoming directory. Email any updated info to [pennsylvanialica@gmail.com](mailto:pennsylvanialica@gmail.com)



- ***DON'T FORGET TO SUBMIT YOUR PA ONE CALL INVOICE TO US BY MAIL OR EMAIL – WE PAY THEM FOR YOU AS PART OF YOUR MEMBERSHIP***
- ***DO UPDATE YOUR COMPANY INFO FOR THE WEBSITE AND MEMBER DIRECTORY***

**WELCOME OUR NEWEST BOARD MEMBER – BARRY MUTZABAUGH Jr.** from B.R. Mutzabaugh Jr. Excavating in Dauphin, PA. Barry attended his first board meeting at the Winter Meeting in State College last month and has also offered to host the PALICA Summer picnic and scholarship presentation at his home. We will have more details on the website and in the summer newsletter coming out in June. We'd love to have some new faces at the picnic and hope the new location helps. We were thrilled to get some new faces at the winter meeting last month and we feel that State College is the location that makes the most sense going forward as it is technically in the center of the state. (below are Crystal & Barry Mutzabaugh Jr.)



### **PALICA SCHOLARSHIP UPDATED INFO-**



**PLEASE READ!**

The Board of Directors voted to increase the scholarship amount for this year to \$1,000.00, up from \$750.00, and that will go to the two applicants that are chosen from the committee, based on the submissions received. The deadline has changed as well to March 31<sup>st</sup> instead of June 30<sup>th</sup> - so please be sure to get them submitted early. The deadline for the National LICA Scholarship is March 15<sup>th</sup>. They award 8- \$500.00 scholarships each year. The date was bumped up for PALICA so that the recipients receive them before they start school, and can hopefully attend the summer picnic to receive their awards.

**PALICA IS PARTNERING WITH THE MERCER COUNTY CONSERVATION DISTRICT TO PUT ON OUR SUMMER FIELD DAYS ON JULY 31<sup>ST</sup> AND AUGUST 1<sup>ST</sup> (Friday/Saturday) at the Munnell Run Farm in Mercer, PA.** There will be displays of equipment, some projects being worked on by contractors, some educational events the Conservation District will put on and much more. As details come together, we will make sure they're on our website and watch your email as well! The Summer newsletter will have full details so make plans to attend!! Our first field day, two summers ago, was a great success and we're looking forward to taking a different spin on this event.



## WELCOME OUR NEWEST MEMBERS!



**Ahner Inground Pools**  
674 Manor Drive  
Northampton, PA 18067  
Javon Ahner-Northampton Cty

**David Kristman Excavating Inc.**  
227 Hill Rd,  
Honey Brook, PA 19344  
David Kristman – Chester Cty

**James Kenney Excavating & Paving**  
3950 Germantown Pike  
Collegeville PA 19426  
Jim Kenney- Montgomery Cty

**Paul Swinglish Trucking Co.**  
211 Haddenville Rd  
Uniontown, PA 15401  
Chad Swinglish – Fayette Cty

**Shenberger & Son's Gen Cont Inc.**  
1112 Telegraph Rd.  
Coatsville PA 19320  
Steve Shenberger, Chester Cty

**TSF Enterprises**  
3915 Beth Drive  
Collegeville, PA 19426  
Steve Folk – Montgomery Cty

**Ambler Industries LLC**  
760 Edison Furlong Rd  
Furlong, PA 18925  
Robert Ambler – Bucks Cty

**Deck's Landscaping Inc.**  
PO Box 835  
Ambler, PA 19002  
Tyler Deck - Montgomery Cty

**Litzenberger Excavating Inc**  
2031 Berger Rd.  
Ottsville, PA 18942  
Ed Litzenberger – Bucks Cty

**Phillips Brothers Electrical**  
235 Sweet Spring Rd  
Glenmoore, PA 19343  
John Phillips – Chester Cty

**Smith & Miller Roofing**  
302 Grove Street  
Avoca, PA 18641  
Jason Gilroy, Lackawanna Cty

**Walter's Excavating Inc.**  
4254 Jefferson Avenue  
Bethlehem, PA 18015  
Nancy Walters – Northampton Cty

**Casilli Corp**  
100 Simmons Rd  
McMurray PA 15317  
Jeffrey Casilli – Washington Cty

**DLM Excavating LLC**  
1215 East Kings Hwy  
Coatesville, PA 19320  
Damon Magozzi – Chester Cty

**Luke Welker Masonry Inc.**  
27 S. Schultz Road  
Telford, PA 18969  
Luke Welker – Montgomery Cty

**Reliable Auto Enterprises**  
251 Keystone Blvd  
Pottstown, PA 19464  
Thomas Bianchini – Mont Cty

**Snyder Land Services LLC**  
340 Constance Dr Unit 5  
Warminster PA 18974  
Robert Snyder – Bucks Cty

### **NEW ASSOCIATE MEMBER**

**Assured Partners of NJ LLC (part of the UFG Insurance program)**

**Andrew Brecker**

**3650 Winding Way**

**Newtown Square, PA 19073**

**484-427-8900**





# Inter-Drain

*"Excellence by Experience"*

## Bower's Great Lakes Inter-Drain, Inc.

*Your Dealer for Inter-Drain Plows, Trenchers and Parts*

1912 W McPherson Hwy, Clyde, OH 43410 • 419-547-2379

[sales@bowersglid.com](mailto:sales@bowersglid.com) • [www.greatlakesinterdrain.com](http://www.greatlakesinterdrain.com)

**BRON**  
POWER TO PERFORM

[www.rwfbron.com](http://www.rwfbron.com)

- Five Core Cooling System exceeds cooling for Tier 4 engine standards
- Quieter Reconfigured Cab Interior for Operator comfort
- Standard DL 850 Drainage Plow increased strength & durability
- LED Light Package for increased visibility for those long days in the field
- Improved swing mechanism for the Onboard Reel for smoother reel speeds & consistent torque
- Optional hydraulic rear step raises out of the way when plowing and lowers when required.
- Standard oscillating track frames.

# BRON 585

## SELF-PROPELLED DRAINAGE PLOW

**AUTO STEER READY | LOW GROUND PRESSURE  
CAT OR CUMMINS ENGINE**







Take the  
extra step

AND  
“MAKE  
YOUR  
MARK”

You know the construction industry. You've worked hard to get your business up and running, with grit and determination. Take the extra step to protect its future by taking advantage of the United Fire Group (UFG) and Prins State LICA insurance program. State LICA members insured in the program will receive:

- Products and services designed for your corner of the construction industry
- Customized risk control services and programs
- The opportunity to earn a safety group dividend

*UFG is the carrier of choice for the Pennsylvania Land Improvement Contractors Association.*

**To find a UFG agent near you, visit [ufgSolutions.com](http://ufgSolutions.com).**







## YOUR LOCAL POSITIONING PROS



**Make Topcon Solutions Store your source for Architecture, Engineering, and Construction solutions.**

Our combined resources, technical expertise, and local training centers makes Topcon Solutions your ideal partner for all business needs. No matter where your job takes you, we've got you covered!

*Approved Supplier*

**COSTARS™** ★★★★★  
Pennsylvania Department of General Services

Visit **topconsolutions.com** or  
call **(800) 443-6780** to learn more



# We'll Help You Put It All Together

**fifs** **25<sup>TH</sup> ANNIVERSARY**  
Franconia Insurance  
& Financial Services  
Smart Choices for a Secure Future

- Personal Insurance
- Financial Services
- Business Insurance
- Employee Benefits

**267.384.5300 • [www.fifs.com](http://www.fifs.com)**



# Port Industries

**Quality Products and Service since 1968**



**[www.PortIndustries.com](http://www.PortIndustries.com)**

**(573) 769-3338**

**Contact us with all of your drainage equipment needs**





Big Switch™ is approved for use under Section 867- Compost Filter Sock. Big Switch™ must be used with a filter sock that meets the specification criteria listed in Section 867. This letter can be attached to Form CS-4171 LA as proof that Big Switch™ is an approved alternate to compost for this use.  
—Pennsylvania Department of Transportation

**PennDOT  
ALERT**

# Make the Big Switch™ to the best in sediment retention and erosion control.



We applaud BEG Group LLC for earning the 100% USDA Certified Biobased Product label ... contributing to an ever-expanding marketplace that adds value to renewable agriculture commodities and creates jobs in rural communities.

—Kate Lewis, USDA BioPreferred Program



Made in the U.S.A., switchgrass is grown and harvested weed-free from American fields in support of our farmers.

**Big Switch™** the flexible mesh tube sock filled with switchgrass, helps retain sediment and other pollutants so cleaned water can flow through. Use it in place of a silt fence, straw bale barrier, or mulch socks—known for being detrimental to the environment and livestock.

**Big Switch®** also:

- does not require trenching or disturbing the soil surface
- is lightweight, so it's ergonomic, easier to install, and less expensive to ship
- has a wider contact surface area
- can be installed where trenching is not viable
- greatly reduces tannic acids, volatile organic compounds, or heavy metals
- does not need to be removed — decomposes naturally



Big Switch™ is listed on the approved Best Management Practice list on DEP's website — Alternate E&S and PCSM BMP's. Therefore, this product has been approved for use on PennDOT projects as a Pub 408, Section 106.02(a)2.c, Project Specific Locally Approved Material. [http://files.dep.state.pa.us/Water/BNPNSM/StormwaterManagement/ConstructionStormwater/Reviewed\\_Alternative\\_BMPs.pdf](http://files.dep.state.pa.us/Water/BNPNSM/StormwaterManagement/ConstructionStormwater/Reviewed_Alternative_BMPs.pdf)

—Pennsylvania Department of Environmental Protection



**BEG Group LLC**

**www.biosecurity.biz (724) 681-4414**

**Big Switch™**  
Biobased Erosion Control Sock