



Drain Tile
Safety Coalition

www.draintilesafety.org

READY TO TILE? KNOW WHAT'S BELOW.

Each drain tile project is as unique as the land itself. Don't be surprised by an underground pipeline or utility.

Screenshot



DRAIN TILE SAFETY COALITION



ABOUT US



Mission: Work with farmers, drainage contractors, ag coops, pipeline and utility operators, One Call centers and policymakers to improve drain tile safety and prevent accidents involving existing underground infrastructure.

Geographic and activity-specific focus:

Focused specifically on drain tile installation and maintenance. National and state-specific activities in 11 states.

Non-profit coalition: 501(c)(3) affiliated with the Pipeline Association for Public Awareness. Steering committee, advisors and program managers lead the organization.

DRAIN TILE SAFETY COALITION

ORIGIN STORY

The Drain Tile Safety Coalition was born in 2018 out of a series of drain tile-related tragedies that sadly resulted in fatalities and serious injuries to farmers and agricultural contractors.

Those tragedies had a significant impact on farm communities, pipeline and utility operators and safety advocates. In response, a group of concerned and safety-conscious individuals and organizations formed the Drain Tile Safety Coalition.





DRAIN TILE DEPTH

WHY DOES IT INCREASE THE
POTENTIAL FOR ACCIDENTS?

Drain tile installation and maintenance is digging and trenching intensive, and **drain tile is often installed 3-5 feet deep** – the same depth as underground utility lines and pipelines.

CASE STUDIES

Farming accidents involving pipelines and utilities occur nearly 3 times every day. These case studies demonstrate how accidents happen and the consequences of hitting a line.

CASE STUDY - IOWA

APRIL 2012

A company failed to contact 811 before installing drain tile. Their tile plow ruptured a 24-inch natural gas pipeline, causing a massive explosion and fire, injuring two employees who were hospitalized, and creating a crater approximately 100 feet long, 35 feet wide and 30 feet deep.

The fire scorched 80 acres and the company's tiling plow and bulldozer were destroyed, along with a high-voltage power line. The pipeline incurred substantial damage and the company that hit the line paid a \$20,000 civil penalty and was sued for damages.



CASE STUDY - ILLINOIS



DECEMBER 2017

Two owners and two employees were installing drainage tile. After completing approximately 400 feet of tile installation, the tiling plow became lodged on an underground object. The farmers hooked up a second tractor in front of the first one to un-lodge it. The two tractors ruptured a 20-inch, high-pressure natural gas pipeline, tragically killing the two owners, severely injuring the two employees onsite. No one had contacted 811 to have lines marked prior to the installation project.



CASE STUDY - IOWA

APRIL 2012

In the spring of 2012, a drain tile installation professional in Iowa went to work on an installation project without first having underground pipelines and utilities located. During the excavation, tiling equipment hit and ruptured a 16-foot diameter natural gas pipeline.

The damage to the pipeline caused a massive explosion and fire, creating a large crater, scorching the farm fields, destroying the company's tiling equipment, and causing substantial damage to the pipeline. Fortunately, the company owner and his two employees escaped unharmed, but the farmland was devastated. Area natural gas customers lost service. The drainage contractor paid a heavy fine for damages.



Drain Tile
Safety Coalition





Contact 811

When planning your field drain tile installation project, call or click 811 to check the location of pipelines and discuss your installation plans with pipeline operators.



Plan ahead

Work with operators during the design phase of the drain tile installation project to determine requirements related to installing drain tile near underground lines.



Maintain safety awareness

Be aware of risks and mitigate hazards. Maintain eye contact with others during installation and wear proper PPE. Ensure trenches are inspected daily and implement trench safety protocols.



Notify operators, if necessary

Even seemingly minor damages to a pipeline can have serious consequences. If you dent, scrape or hit a line, notify the operator.

ABOUT US

Formed in 2018, the Drain Tile Safety Coalition is a non-profit dedicated to sharing best practices in safety to reduce the number of accidents resulting from drain tile installation on farms in the United States.

GET THE FACTS



Pipelines and utility lines can be located 12" or less below the surface and the depth of soil coverage can change over time.



Permanent markers identify general, not exact location of underground lines.



Farming accidents involving pipelines and utility lines occur nearly 3 times every day.



PLANNING TIPS

ADVANCED PLANNING IS
CRITICAL FOR A SAFE AND
SUCCESSFUL DRAIN TILE
PROJECT.

DO NOT ASSUME LOCATION OR DEPTH OF UNDERGROUND LINES

Do not assume the location or depth of underground lines; only operators can confirm depth.

Pipelines can be located 12" or less below the surface and depth of soil coverage can change over time. Permanent markers identify general, not exact location of underground lines.

Underground lines can be located 10-20' from permanent markers and don't follow a straight line between markers.



PLANNING TIPS

ADVANCED PLANNING IS
CRITICAL FOR A SAFE AND
SUCCESSFUL DRAIN TILE
PROJECT.

CALL 811 OR VISIT pa1call.org

Call 811 or visit **pa1call.org**. Submit a **design notification** or **complex Project notification** request for qualifying projects.

- **Design Notification**– facilitates information sharing with pipeline and utility operators near your project during design/planning. Design drawings/plans can be submitted online to initiate information sharing. Preliminary design notification submitted more than 90 days before the start of a project. Final design notification submitted between 10-90 days before project start date.
- **Complex Project Notification**– initiates the process to share information and schedule a pre-excavation meeting with pipeline and utility operators near your project. Must be initiated at least 10 days before the start of a project.



PLANNING TIPS

ADVANCED PLANNING IS
CRITICAL FOR A SAFE AND
SUCCESSFUL DRAIN TILE
PROJECT.

WORK WITH OPERATORS DURING DESIGN PHASE

Work with operators to determine requirements related to installing drain tile along underground lines, such as:

- Minimizing the number of times drain tile crosses underground pipeline or utility lines.
- Drain tile that crosses underground pipelines and utility lines should be near 90 degrees (perpendicular to line) and should clear line by at least 24 inches
- Space long runs of parallel tile and pipeline 25 feet apart
- Use solid tiles and plastic pipe when drain tile crosses underground lines



INSTALLATION SAFETY TIPS

KEEP SAFETY TOP OF MIND
DURING INSTALLATION

MAINTAIN SAFETY AWARENESS DURING INSTALLATION

- Be aware of risks and mitigate hazards
- Maintain eye contact with others during installation and wear proper PPE
- Ensure trenches are inspected daily and implement trench safety protocols
- Keep emergency contact numbers for underground utilities readily available
- Know route to emergency services
- Operators may choose to have a representative onsite during installation



INSTALLATION SAFETY TIPS

KEEP SAFETY TOP OF MIND
DURING INSTALLATION

NOTIFY OPERATORS, IF NECESSARY

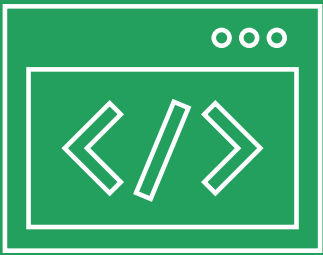
- Even seemingly minor damages to a pipeline can have serious consequences
- If you dent, scrape or hit a line, notify the operator
- If you cause or witness even minor damage to a pipeline or utility line, evacuate the area, call 911 and the pipeline or utility operator immediately

FIELD TILE TESTIMONIAL

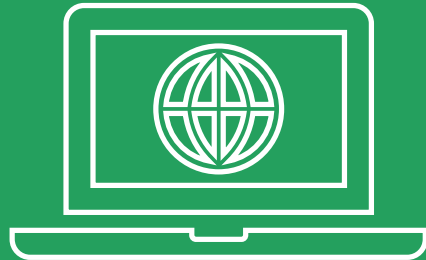
"DON'T TAKE A CHANCE... DON'T THINK YOU
KNOW.... CALL 811..."

- JIM KLINE, KLINE FAMILY FARMS

TOOLS AND RESOURCES



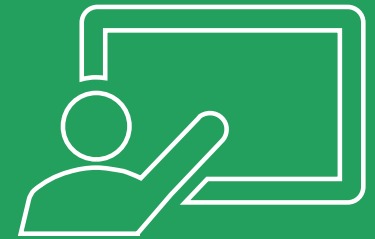
Drain Tile Safety
Coalition Website



National Pipeline
Mapping System
Website



811 In Your State



PHMSA Community
Liaison Services
Contacts

CONTACT US

DRAIN TILE SAFETY COALITION

WEBSITE

draintilesafety.org

EMAIL CONTACTS

draintilesafety@gmail.com



It happened to
him.

It could happen
to you. Always contact 811 or
clickbeforeyoudig.com before



Drain Tile
Safety Coalition

Drain Tile
Safety Coalition

Three Seconds Later



Watch and share the award-winning, first-person account of a tragic farming accident and its impact on a close-knit community.



Scan to watch film

ThreeSecondsLater.org